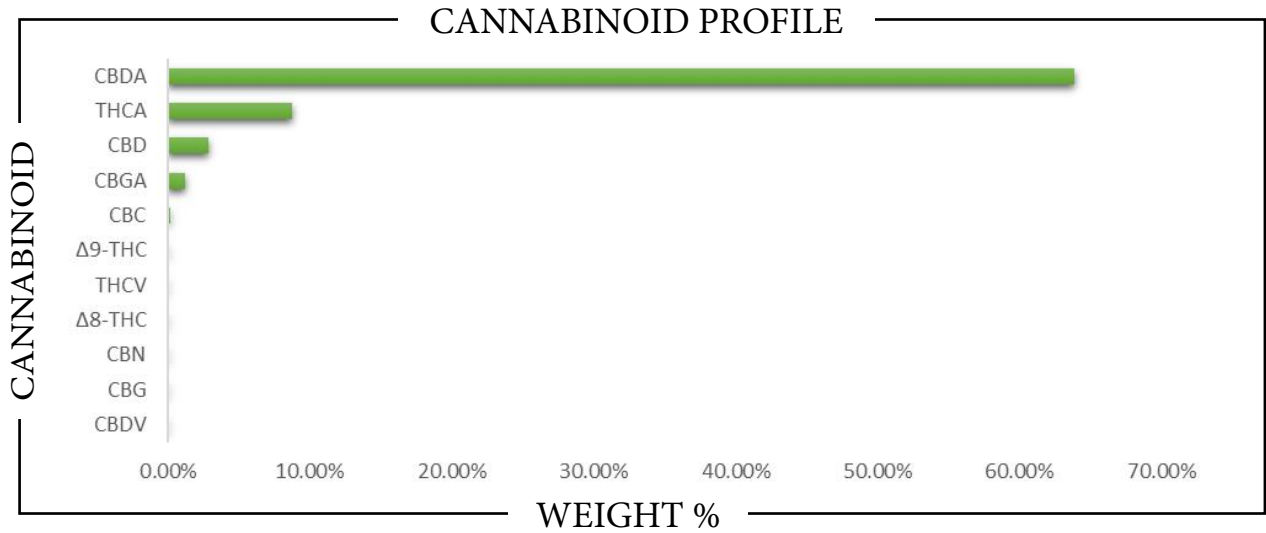


REPORT PREPARED FOR: _____

 PROJECT# _____
 LAB ID _____
 RECEIVED DATE _____
 REPORT DATE _____


SAMPLE NAME: _____



CBC	→	→
CBD	→	→
CBDA	→	→
CBDV	→	→
CBG	→	→
CBGA	→	→
CBN	→	→
Δ8-THC	→	→
Δ9-THC	→	→
THCA	→	→
THCV	→	→
Total CBD	→	→
Total CBG	→	→
Total THC	→	→


 Analysis Method: TP-POT-05
 By HPLC-VWD
 Total THC = (0.877 x THCA) + Δ9-THC
 Total CBD = (0.877 x CBDA) + CBD
 Total CBG = (0.877 x CBGA) + CBG
 ND = Not Detected

 Prepared By: _____
 Prep Date: _____
 Batch ID: _____

 Analyzed By: _____
 Analysis Date: _____


APPROVED BY:
JUSTIN HALL
 LAB DIRECTOR

Justin Hall
 SIGNATURE

SIGNED ON



Customer: Akira Botanicals
Address: 329 Emma Rd, Asheville, NC
 28806
Sample Name: Strawberry Fritter 120925
Matrix: Concentrate
Lab Number: 26020077-1

Residual Solvent Profile

Test Conditions: 19°C
Extraction Technician: CB
Analytical Chemist: CB

Received Date	Extraction Date	Analysis Date
02/12/26	02/12/26	02/13/26

Test Method: Residual Solvents by GC/MS		Results
Compound	LOD (ug/g)	ug/g
2-Methylbutane	12.376	N.D.
Acetone	6.188	17.030
Acetonitrile	12.376	N.D.
Benzene	0.619	N.D.
Butane	12.376	85.947
Ethanol	6.188	22.531
Ethyl Acetate	1.238	N.D.
Ethylbenzene	1.238	N.D.
Isobutane	12.376	66.788
Isopropanol	6.188	N.D.
Methanol	12.376	N.D.
Methylene Chloride	6.188	N.D.
Propane	12.376	N.D.
Tetrahydrofuran	1.238	N.D.
Toluene	1.238	N.D.
m+p Xylene	1.238	N.D.
n-Heptane	6.188	N.D.
n-Hexane	6.188	N.D.
n-Pentane	1.238	N.D.
o-Xylene	1.238	N.D.

The following compound is not currently part of an ISO 17025 accredited method: Ethyl Acetate.

Change Request (021726): Update sample name.

Approved By: CQ

Colton Brook - Laboratory Director - 02/13/26

The results of this report are based solely on the sample submitted and cannot be reproduced. Decision Rule: Measurement uncertainty is not accounted for in the reported values. Results are based solely on calculated numbers. Altitude Consulting makes no Statements of conformity. Pesticide, metal, and microbial analyses are subcontracted to ISO 17025 laboratories.