

REPORT PREPARED FOR: _____

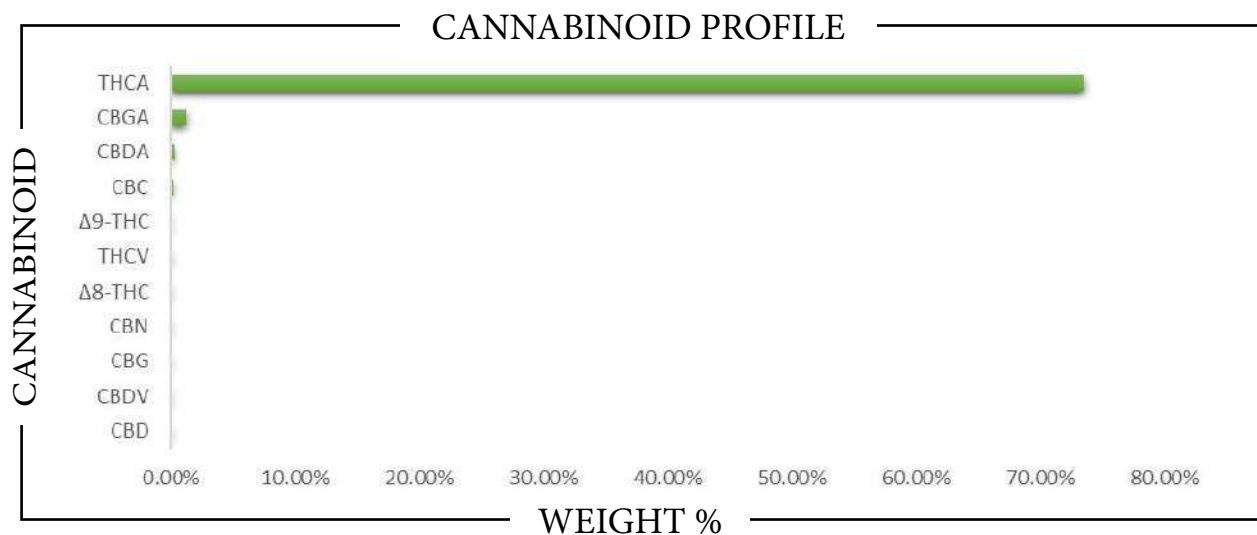
PROJECT# _____

LAB ID _____

RECEIVED DATE _____

REPORT DATE _____

SAMPLE NAME: _____



CBC	→	→
CBD	→	→
CBDA	→	→
CBDV	→	→
CBG	→	→
CBGA	→	→
CBN	→	→
Δ8-THC	→	→
Δ9-THC	→	→
THCA	→	→
THCV	→	→
Total CBD	→	→
Total CBG	→	→
Total THC	→	→



Analysis Method: TP-POT-05
 By HPLC-VWD
 Total THC = (0.877 x THCA) + Δ9-THC
 Total CBD = (0.877 x CBDA) + CBD
 Total CBG = (0.877 x CBGA) + CBG
 ND = Not Detected

Prepared By:
 Prep Date:
 Batch ID:

Analyzed By:
 Analysis Date:



APPROVED BY:
JUSTIN HALL
 LAB DIRECTOR

Justin Hall
 SIGNATURE

SIGNED ON



Customer: Akira Botanicals
Address: 329 Emma Rd, Ashville, NC
 28806
Sample Name: Kiwi Alien Candy 091225
Matrix: Concentrate
Lab Number: 25100080-1

Test Conditions: 19°C
Extraction Technician: CB
Analytical Chemist: CB

Residual Solvent Profile

Received Date	Extraction Date	Analysis Date
10/14/25	10/14/25	10/15/25

Test Method: Residual Solvents by GC/MS		Results
Compound	LOD (ug/g)	ug/g
2-Methylbutane	13.210	N.D.
Acetone	1.321	6.770
Acetonitrile	13.210	N.D.
Benzene	0.661	N.D.
Butane	13.210	44.967
Ethanol	6.605	14.260
Ethyl Acetate	1.321	N.D.
Ethylbenzene	1.321	N.D.
Isobutane	13.210	N.D.
Isopropanol	6.605	N.D.
Methanol	6.605	N.D.
Methylene Chloride	6.605	N.D.
Propane	13.210	N.D.
Tetrahydrofuran	1.321	N.D.
Toluene	1.321	N.D.
m+p Xylene	1.321	N.D.
n-Heptane	6.605	N.D.
n-Hexane	6.605	N.D.
n-Pentane	1.321	N.D.
o-Xylene	1.321	N.D.

The following compound is not currently part of an ISO 17025 accredited method: Ethyl Acetate.

Colton Brook - Laboratory Director - 10/15/25

The results of this report are based solely on the sample submitted and cannot be reproduced. Decision Rule: Measurement uncertainty is not accounted for in the reported values.
 Results are based solely on calculated numbers. Altitude Consulting makes no Statements of conformity.
 Pesticide, metal, and microbial analyses are subcontracted to ISO 17025 laboratories.